

**HOMEDALE SCHOOL DISTRICT #370
2010-11 SCHOOL CALENDAR**

Adopted 6/1/10

MONTH	STUDENT DAYS					TEACHER DAYS	DESCRIPTION
	M	T	W	TH	F		
August 2010	2	3	4	5	6		August 12 - Registration K-4 & 9-12 (2:00-7:00 p.m.)
	9	10	11	12	13		August 16 - Staff Inservice/Work Day
	16	17	18	19	20		August 16 - New Staff Orientation (1:00 p.m.)
	23	24	25	26	27		August 17 - Staff Inservice/Work Day
	30	31	10	12	August 18 - First Day of School (K-12) (<i>grades 5-8 registration during first day of school</i>)		
September 2010			1	2	3		September 3 - <u>1:30 Dismissal</u> (except kindergarten) - Staff Inservice/Work Day
	⊗	7	8	9	10		September 6 - NO SCHOOL - Labor Day
	13	14	15	16	17		September 20 - Grades 9-12 P/T Conferences 3:30-7:30 p.m. (<i>No Early Release</i>)
	20	21	22	23	24		September 27 - Grades 5-8 P/T Conferences 3:30-7:30 p.m. (<i>No Early Release</i>)
	27	28	29	30	21	22	
October 2010					1		October 7 & 8 - NO SCHOOL - State Teacher Meetings (Non-Contract Days)
	4	5	6	⊗	⊗		October 14 - End of 1st Quarter
	11	12	13	14	15		October 22 - NO SCHOOL - Staff Inservice/Work Day (exchange for 3 early release days)
	18	19	20	21	⊗		October 27 - <i>Kgtn. only</i> P/T Conferences 8:00 a.m.-7:30 p.m. (School in session)
	25	26	27	⊗	⊗		October 27 - Grades 1-4 P/T Conferences 3:30-7:30 p.m. (School in session)
					K-4	16	October 28 - Grades K-4 <i>only</i> - NO SCHOOL - K-4 P/T Conferences 10:00 a.m.-8:00 p.m.
					5-12	17	19
November 2010	1	2	3	4	5		November 15 - Grades 5-8 P/T Conferences 3:30-7:30 p.m. (<i>No Early Release</i>)
	8	9	10	11	12		November 22 - Grades 9-12 P/T Conferences 3:30-7:30 p.m. (<i>No Early Release</i>)
	15	16	17	18	19		November 24-26 - NO SCHOOL - Thanksgiving
	22	23	⊗	⊗	⊗		
	29	30	19	20			
December 2010			1	2	3		December 16 & 17 - Semester Tests - Grades 9-12 (<u>1:47 Dismissal</u> - <i>Grades 9-12 only</i>)
	6	7	8	9	10		December 17 - End 2nd Quarter (Grades 5-12) - <u>1:30 Dismissal</u> (<i>Grades K-8</i>)
	13	14	15	16	17		December 20-31 - NO SCHOOL - Christmas Vacation
	⊗	⊗	⊗	⊗	⊗	13	14
January 2011	3	4	5	6	7		January 1 - NO SCHOOL - Christmas Vacation
	10	11	12	13	⊗		January 7 - End 2nd Quarter (Grades K-4)
	⊗	18	19	20	21		January 14 - <u>1:30 Dismissal</u> (except kgtn) -- Staff Inservice/Work Day
	24	25	26	27	28		January 17 - NO SCHOOL - MLK Day (Non-Contract Day)
	31	20	21				
February 2011		1	2	3	4		February 7 - Grades 5-8 P/T Conferences 3:30-7:30 p.m. (<i>No Early Release</i>)
	7	8	9	10	⊗		February 11 - <i>Grades K-8 only</i> - NO SCHOOL - Staff Inservice (Smorgasbord prep)
	14	15	16	17	18		February 11 - <i>Grades 9-12 only</i> - <u>1:30 p.m. Dismissal</u> - Staff Inservice
	⊗	22	23	24	25		February 14 - Grades 9-12 P/T Conferences 3:30-7:30 p.m. (<i>No Early Release</i>)
	28	18	19	19			
March 2011		1	2	3	4		March 10 - End of 3rd Quarter
	7	8	9	10	⊗		March 11 - NO SCHOOL - Staff Inservice/Work Day (exchange for 3 early release days)
	14	15	16	17	⊗		March 16 - <i>Kgtn. only</i> P/T Conferences 8:00 a.m.-7:30 p.m. (School in session)
	⊗	⊗	⊗	⊗	⊗		March 16 - Grades 1-4 P/T Conferences 3:30-7:30 p.m. (School in session)
	28	29	30	31		K-4	15
				5-12	16	18	March 18 - NO SCHOOL (exchange for evening P/T conferences)
April 2011					1		April 11 - Grades 5-8 P/T Conferences 3:30-7:30 p.m. (<i>No Early Release</i>)
	4	5	6	7	8		April 11 - Grades 9-12 P/T Conferences 3:30-7:30 p.m. (<i>No Early Release</i>)
	11	12	13	14	15		April 22 - NO SCHOOL (Non-Contract Day) Good Friday
	18	19	20	21	⊗		April 25 - NO SCHOOL (Non-Contract Day) (FURLOUGH)
	⊗	26	27	28	29	19	19
May 2011	2	3	4	5	⊗		May 6 - <u>1:30 Dismissal</u> (except kindergarten) - Staff Inservice/Work Day
	9	10	11	12	13		May 17 - Last Day of School for SENIORS ONLY
	16	17	18	19	20		May 18 - Semester Tests - Grades 9-11 (<u>1:47 Dismissal</u> - <i>Grades 9-11 only</i>)
	23	24	25	26	27		May 19 - <u>1:30 Dismissal</u> - Last Day of School (Semester Tests)
	30	31	14	15	May 20 - Staff Inservice/Work Day		
						May 23 - Graduation 7:00 p.m.	

HOMEDALE MIDDLE SCHOOL

“Home of the Trojans”

“Educating students daily for successful citizens tomorrow.”

3437 Johnstone Road
Homedale, Idaho 83628

Telephone: (208) 337-5780

Fax: (208) 337-5780

Dear Students:

Welcome to a great school! On behalf of the entire faculty and staff we extend our best wishes to you for a successful school year. Our staff is dedicated to your success.

Mission Statement

To create a safe and caring environment in which all students are empowered to excel academically, build mutual respect, and develop the skills necessary to become responsible individuals with integrity. As a result, our students will be prepared for a successful transition to the high school program.

Vision Statement

Everything we do is in the best interest of our students – we inspire them to dream toward a better future, and we equip them with the skills necessary to achieve those dreams.

This Agenda Book is intended to help you organize yourself. You will not only find our rules, but a calendar for daily assignments as well as a section for short and long term goals. If you use this every day, in every class you will increase your chances of being successful and learn skills that will help you be a more responsible person. Organized people are productive, goal oriented, and successful. This is what we want you to be.

REMEMBER HARD WORK, DONE WELL FEELS GOOD!

Following this page is the student handbook that outlines the policies and procedure at Homedale Middle School. Your teacher will review this handbook with you on or near the first day of school. Please take this student agenda home and review the handbook portion with your parents/guardians.

I have read and understand the policies and procedures outlined in this handbook. Please sign both front and back, tear this page from the agenda and return to your homeroom teacher the next day.

Student Signature

Date

Parent Signature

Date

**HOMEDALE SCHOOLS
STUDENT/TEACHER/PARENT/PRINCIPAL COMPACT**

HAND IN HAND WE CAN LEARN AND WORK TOGETHER TO BUILD A BETTER WORLD.

We believe parent and community involvement is essential for the effectiveness of the Homedale School District and is a critical key factor that contributes to each student's achievement and success.

I, as a **PARENT/CAREGIVER**, agree to

- Make sure my child is punctual and attends school regularly.
- Go over my child's assignments and read school communications.
- Provide for my child a place and time to study and have daily reading time.
- Attend school functions (such as Parent-Teacher conferences, open house, concerts, award assemblies, P.T.O.)

_____ Date _____

I, as a **STUDENT**, agree to

- Know and follow school rules and be responsible for my own behavior.
- Come to class on time and be prepared to work.
- Pay attention and ask for help when I need it.
- Show respect for others and myself.
- Give corrected work and school communications to my Parent/Caregiver.

_____ Date _____

I, as **TEACHER**, want my students to reach their fullest potential. I will

- Be aware of the needs of your child.
- Communicate with you about your child's progress.
- Teach necessary concepts to your child
- Provide assistance to parent/caregiver to help your child at home.

_____ Date _____

I, as **PRINCIPAL**, agree to

- Encourage positive communication between the teacher, parent, and student.
- Encourage teachers to regularly provide opportunities for the practice of academics at home.
- Provide a safe environment conducive to learning.

_____ Date _____

HAND IN HAND WE WILL WORK TOGETHER TO CARRY OUT THE AGREEMENT OF THIS COMPACT

Please return this page signed by both student and parent to your homeroom teacher

Absences

The State Board of Education standards require regular attendance of all youth until age 16. Regular attendance, as established by the Homedale School Board of Trustees, means that a student cannot be absent more than twelve (12) days in any class at the time the class is scheduled. The absence total includes: pre-arranged, excused, and unexcused absences.

An absence is considered to be **excused** when your parents have prior knowledge of the absence, have given their permission and have alerted the school. Parents are asked to phone the school on any day you are absent. A phone call **or** a written excuse from the parents is required for each day you are absent from school. **Written excuses should include: student's name, date of absence, and reason for the absence.** Work missed may be made up for full credit within a period of time not to exceed twice the time missed.

Admit slips should be picked up at the office between 8:00-8:15. Failure to do so may result in a tardy to class.

An absence is **unexcused** when parents and/or school officials have not authorized it. Unexcused absences may result in extended school, or other consequences.

Truancy is defined as being absent from school (or a class) without the knowledge of parents or school authorities. Truancies will be processed in the following manner:

1st – The student will conference with the principal and the parent/guardian will be notified. The student will be assigned to the next available extended school.

2nd – The student will be suspended from school and a conference scheduled with the principal.

3rd – The student will be suspended from school and the parent will be notified that the case may be referred to the School Board of Trustees.

It is against Idaho State law for a student to be truant from school. Therefore, after three (3) truancies, a student may be reported to the Owyhee County Prosecuting Attorney as a habitual truant. This will result in the student and/or parent dealing with the court system.

Academic/Behavior Eligibility Considerations

HMS will follow all current and subsequent eligibility requirements as set forth by the District. All students wishing to participate in extra-curricular activities must meet these eligibility standards. Head coaches have the authority to require additional academic/behavior guidelines as deemed appropriate. To participate during the school day in extracurricular activities a student must demonstrate that they are currently passing the class to be missed with a grade of "c" or better, and have no unresolved behavior referrals. Exclusions to this policy will include the following (1) the student and/or team's participation in sanctioned (IHSAA) playoffs or championship events, (2) the student's participation in an activity that is clearly a requirement of the classroom instruction and their grade will be affected if they do not attend, and (3) any question about the validity of the exclusion will be determined by the principal of the school and the principal's decision will be final.

Activity Participation Policy

- A. The Board of Trustees believes that all students have the right to learn in an atmosphere that is conducive to their success; that the use and abuse of chemicals by students have a detrimental effect on the ability of the staff to provide a meaningful educational program; that the harmful use of chemicals is not a normal stage of adolescence. District policy and regulations are based on the laws of the State of Idaho and recognize that the violation of those laws can subject violators to the process of law.
- B. This policy is for Middle School students who participate in any of the following school activities: all athletics, cheerleading, and all elected offices of the school.
- C. Prior to participating in the activities listed above, a student and a parent/guardian must sign a copy of the District's Activity Participation Policy. The signed copy must be on file with the Middle School before the student may participate in these activities. Only one signed policy need be on file

for each school year. All 7th graders who choose to participate in extra-curricular activities will need to have a physical on file. It will be good for 2 years.

- D. Participants in an interscholastic activity shall be required to present and conduct themselves in a manner that will at all times bring credit to Homedale Middle School. Failure to do so will result in appropriate action, suspension, or both, to fit the circumstances.

Activity Participation/Absence Policy

All schoolwork and assignments for students involved in any school activities shall be taken care of before the student leaves campus for the activity. The **“twice the time missed” as set forth in the Attendance policy is not applicable to absences due to activity participation.** A student must attend at least 4 periods of the school day or get administrative permission, to participate in any activity that day.

Assembly Conduct

When assemblies of any kind are scheduled, students are expected to report to the assigned area in a quiet and efficient manner, and be seated as quickly as possible. Belongings will be left in the class they are dismissed from and will be retrieved after the assembly. Students will also be expected to sit with the class/teacher they are dismissed from. We are confident that your behavior will be high quality. Homedale kids know how to act appropriately. Please focus your **attention to the assembly presenter or presenters. If anyone acts inappropriately, they will be immediately removed.** Students who desire not to attend any assembly must report to an alternate assigned area with study or reading materials. Any student failing to report to this assigned area or the assembly will be considered truant.

Breakage/Vandalism/Malicious Destruction

Breakage or destruction caused by horseplay or avoidable acts will be the financial responsibility of those person(s) causing the damage. Students and/or parents/guardians will be held financially responsible for any acts of vandalism and/or malicious destruction to school property. This may also include private property located on the school premises.

Building Appearance

Our school has a very positive reputation concerning the appearance of the building and grounds. The staff and student body have the responsibility to help maintain this positive image by: helping to keep rooms neat and clean; keeping lockers closed; using waste baskets; not marking on walls or desks; and refraining from willful destruction of school property.

Bus Conduct

Those students who ride a school bus or any other type of transportation provided by the school district are subject to the rules of the school and must follow the directions given by the driver and/or supervisor. You will be expected to conduct yourself in a manner that is safe and orderly for all who are transported.

Cell Phones

Students who bring a cell phone to school cannot use it during the school day. If a student needs to use a phone during class, they can come to the office and use the office phone. If students are caught using their cell phone, they will remove the battery, hand the phone to a staff member, and parents can pick the phone up after school at their convenience.

Cheating

Whenever a student is guilty of cheating, the individual teacher will handle the first offense. Further offenses will be disciplined in a manner that is more appropriate to the situation.

Church Night

Wednesday night is designated as church night. The school cooperates with local churches by not scheduling school functions or athletic contests on this night. In certain sports, practices may be extended because of limited space. The exception to this rule is when Snake River Valley activities are scheduled outside the jurisdiction of the local school district.

Closed Campus

The Middle School has been designated as a closed campus during regular school hours. Students may only leave campus if a parent/guardian personally checks them out at the office.

Conduct Policy

All students at Homedale Middle School are expected to conduct themselves in a respectful, responsible manner. Our program is designed to provide an atmosphere for students to learn to accept and perform these responsibilities. Within this framework, Homedale Middle School has as its goal the preparation of students for a better future as a productive, responsible citizen.

With this understanding of the objectives of Homedale Middle School, students are expected to do the right and proper thing and behave in an acceptable manner. Persistent violators of acceptable standards will not be able to continue at Homedale Middle School. An attempt is made to treat each student as an individual, but all students are expected to live, act, and behave according to our standard.

Credit System for 7th & 8th Graders...Idaho Code

It is the goal of Homedale Middle School for all students to be successful. Middle school is a transition time for students. Many habits are formed and reinforced during these years. In order to help set students up for success in their current and future education, HMS and the school board has implemented the Middle School Credit system for promotion.

To earn promotion to the next grade, all 7th and 8th grade students must earn 80% of the credits attempted. They must pass both semesters of yearlong CORE courses. Must have an attendance rate of no less than 93%.

An alternate path is available and students must meet 2 or 3 requirements to be promoted. 1. Earn proficient scores in the reading, math, language ISAT (a 3 on the DWA will meet the language requirement). 2. Possess a 2.0 cumulative yearly grade point average, 3. Have an attendance rate of no less than 93%.

5th & 6th grade students must pass their core classes, and earn no more than 2-F's...If 5th-6th grades students earn 2 or more F's in any one content area, they can use the alternate mechanism, of 2 of 3, to earn promotion to the next grade

Credit Recovery Options: Students must retake two of the failed core credits through mechanisms established by the administration.

Directory Information Notice

The Family Educational Rights and Privacy Act (FERPA), a Federal law, requires that the Homedale School District, with certain exceptions, obtain your written consent prior to the disclosure of personally identifiable information from your child's education records. However, the Homedale School District may disclose appropriately designated "directory information" without written consent, unless you have advised the District to the contrary in accordance with District procedures. The primary purpose of directory information is to allow the Homedale School District to include this type of information from your child's education records in certain school publications. Examples include:

A playbill, showing your student's role in a drama production;

The annual yearbook;

Honor roll or other recognition lists;

Graduation programs; and

Sports activity sheets, such as for wrestling, showing weight and height of team members.

Directory information, which is information that is generally not considered harmful or an invasion of privacy if released, can also be disclosed to outside organizations without a parent's prior written consent. Outside organizations include, but are not limited to, companies that manufacture class rings or publish yearbooks. In addition, two federal laws require local educational agencies (LEAs) receiving assistance under the Elementary and Secondary Education Act of 1965 (ESEA) to provide military recruiters, upon

request, with three directory information categories - names, addresses and telephone listings - unless parents have advised the LEA that they do not want their student's information disclosed without their prior written consent.

If you do not want the Homedale School District to disclose directory information from your child's education records without your prior written consent, you must notify the District in writing within 30 days of receipt of this notice. The Homedale School District has designated the following information as directory information:

Student's name

Grade level

Parents'/guardians' names

Academic awards, degrees, and honors

Information in relation to school-sponsored activities, organizations, and athletics

Discipline Process

Our goal is to teach our students to spend their time and energy productively. To further Homedale Middle School's excellence, we expect students to behave in a manner that will bring honor to God and our school. The school's aim in dealing with student misconduct is not primarily to punish, but to bring about change.

In an effort to create and maintain an environment in which students can grow spiritually, academically and socially we have designed a discipline plan to encourage mutual respect and promote independent behavior in our students. This plan is expected to insure that all students understand their rights and responsibilities, the consequences of violations of school rules, and the procedures for dealing with violations.

MINIMUM STANDARDS AND GUIDELINES

The guidelines below are designed to assist in providing an optimum atmosphere for learning. A child who does not respond to authority will have a difficult time in society.

Homedale Middle School desires that students show respect for those in authority. This requires obedience to all staff (teachers regardless of grade level, office staff, bus drivers, janitorial staff, aides, volunteers, and lunchroom staff) unless they are asking the student to do something unethical or against a family standard. Appealing to the authority while communicating a good attitude is acceptable.

Having respect for authority requires that students:

A) Come to class prepared, including:

1. Having assignments completed.
2. Bringing appropriate paper, pen, pencils, and other material the teacher requires.
3. Being seated in class ready to perform when the bell rings.

B) Act in a manner that is not distracting or disrespectful.

C) Do things that build others up, not hurt them.

CLASSROOM LEVEL

As a part of the educational process, students are expected to learn appropriate and responsible behavior. Each teacher will have in place a classroom management plan. Staff members are expected to discipline students in a manner appropriate to the offense, building an atmosphere of cooperation and respect. When the standard classroom management consequences fail to produce desired behavior, the following process will begin:

*Step A: **Warning*** (this may or may not be a part of standard classroom management techniques)

*Step B: **Consequence*** – Each teacher should have a set consequence (lunch detention/lost recess are common choices) that the students can expect.

*Step C: **Consequence/Parent Contact*** – The student will be assigned a 2nd consequence (which may be a repeat of the 1st) and the teacher will make an attempt to enlist the parent's help. This contact will be

made by phone. If a phone call is unsuccessful, a letter will be sent by the teacher outlining the student's behavior.

At the classroom level, all students will begin on Step A on the first day of each week.

If inappropriate behavior continues beyond the parent contact (Step C) during a week, the student will advance to Step 1 (office referral).

If a student reaches Step C (just short of an office referral) for three consecutive weeks, he/she will be advanced to Step 1.

ADMINISTRATIVE LEVEL

Discipline problems that continue in spite of the teacher's efforts or of a more serious nature, will be dealt with at the administrative level in the following way:

Step 1: Extended School – 30 minutes

Step 2: Extended School – 60 minutes

Step 3: In-School Suspension – 1 day

Step 4: In-School Suspension – 3 days

Step 5: Out-of-School Suspension – 1 day

Step 6: Out-of-School Suspension – 3 days

Step 7: Out-of-School Suspension – 5 days and Administrative Review

Step 8: Out-of-School Suspension – until the next scheduled Board meeting and recommendation for expulsion

Each referral to the Administrative Level within four (4) weeks of the previous referral will advance the student to the next step.

Conflict & Fighting

Students who have a difference of opinion, which could lead to conflict, should seek help from the school staff. Students who provoke or start fights or who are guilty of hitting, slapping, shoving, or otherwise physically assaulting another first will usually receive more severe disciplinary consequences. Students are expected to immediately report another student who is trying to start a fight or who has physically assaulted another. Those involved in fights or other conflict will be subject to Extended School, suspension and/or expulsion.

Counseling and Guidance

The Counselor's Office is open to all students at any time. Personal, social, or school matters that may be discussed will be held strictly confidential. Contact the counselors in the office between classes, before or after school, or at lunchtime. If your counselor is not available when you stop by, leave your name with the secretary and you will be sent for later. Peer counselors are also available to assist you through the Natural Helpers and Youth-to-Youth programs.

Dance Policy

The administration and faculty recognize that school dances are very popular among 7th/8th grade students. The following guidelines have been established.

1. Two dance/activity events will be scheduled during the school year (Fall and Spring).
2. Dances/activities will be held from 3:10 – 4:30 p.m. Please make arrangements to pick up your student promptly after the dance.
3. Only Homedale 7th/8th grade students will be admitted. Neither visitors nor high school students will be permitted. Middle School students are not allowed at Homedale High School dances!
4. Students who leave the dance **will not** be re-admitted.
5. Students arriving later than 3:10 p.m. will not be admitted to the dance/activity.
6. **Student dress must meet the school dress code.** Our dances are **not formal** dress dances.

District Academic Code for Activities

It is a **privilege** to be able to participate in activities at Homedale Middle School. Along with the privilege is the **responsibility** of the student to do well in academics. The following academic criteria is required of all students in order to participate in activities:

1. Pass all classes
2. Maintain a current 2.0 GPA in all classes

Once a week throughout the year, grades are checked on all students participating in extracurricular activities. Students not meeting the criteria in a given week will be placed on either **probation** or **suspension**.

If the student is not meeting the criteria, the student, parent/guardian, and advisor is notified that the student is on **probation**. The student must still participate in practices and contests the following week but is warned to bring the grades up.

If the student is not meeting the criteria for a second consecutive week they are placed on **suspension**.

The student would not be allowed to participate in any contest (suit up, sit on the bench, travel with the team, etc.) until the next grading period in which they meet the academic criteria. The student would be allowed to practice with the team provided they are seeking extra help to meet the academic criteria.

Please refer to the complete district policy (8.17) for more information.

Dress Standards - Modesty Code

The administration and faculty recognize that certain standards of dress are desirable in the interest of better education. Extremes of dress and appearance attract improper attention and thus detract from the learning process in the classroom. Examples of dress we consider inappropriate for Middle School students include the following:

1. Blouses, sweaters or shirts that do not cover the stomach, back, or undergarments. Tank-type shirts and other apparel deemed inappropriate or immodest by the staff and administration. Sleeveless shirts should cover from neckline to sleeve line.
2. Cut-offs, shorts, and dresses that do not adhere to a length, which is modest and appropriate for school time as, deemed by the staff and administration. This also includes cuts, rips, or holes in any clothing, which could be deemed immodest.
3. Clothing with questionable language or graphics portrayed.
4. Hats worn in the building (except on special occasions). This includes bandanas, scarves, visors, knit caps, and sweatshirt hoods.
5. Shoes or sandals **MUST** be worn.
6. Any article of clothing (or lack thereof), jewelry, make-up, etc., which draws undue attention or is disruptive to the educational environment is considered inappropriate.
7. Students will be asked to tuck in hanging belts. Non-compliance will result in the belt being taken away.

Drugs and Alcohol

Consumption, possession, sale, or being under the influence of any illegal narcotic, dangerous drug/substance or alcohol of any form, on or about the school premises or at any school-sponsored activity is prohibited. Violating this regulation will be handled in accordance with the School District's "Substance Abuse" policy 8.11, which is available from an administrator, Substance Abuse Education Coordinator, counselor or staff member. In addition, when the situation calls for it, the violator will be turned over to the police, suspended, and/or expelled from school.

Extended School

The Extended School Study Program is designed as an alternative to short-term suspension and as a positive approach to dealing with students who are not complying with school attendance, tardy policies, and school/classroom rules. Extended School will be attended for the following areas:

1. Three (3) unexcused tardies in any class during a nine (9) week grading period.
2. Truancies and/or skipping a class without permission of the student's parent(s) and/or instructor.

3. Behavior problems as determined by the Administration.
4. Other infractions of the school rules, which could be used in lieu of suspension.

Extra-Curricular Eligibility

Any student holding an office and/or participating in extra-curricular activities must pay their student body activity fee to be eligible to participate as such. Any student participating in extra-curricular activities will be subject to the district academic code for activities.

Field Trips

Students must adhere to District Rules and Guidelines. Students must be passing all classes/subjects they will miss while on field trip and notify teachers in advance. Students who are failing a class/subject must have prior permission from that teacher and the principal or his/her designee. It is the responsibility of the student to gain that permission. Students who are not passing or have not completed the field trip form may not be allowed to participate.

Gang Activity

It is the policy of the Homedale School District that membership in secret fraternities or sororities, or in other clubs or gangs not sponsored by established agencies or organizations, is prohibited. Gangs that initiate, advocate or promote activities, which threaten the safety, or well being of persons or property on school grounds or which disrupt the school environment are harmful to the educational process.

The use of hand signals, graffiti or the presence of any apparel, jewelry, accessory or manner of grooming which, by virtue of its color, arrangement, trademark, symbol or any other attribute which indicates or implies membership or affiliation with such a group, presents a clear and present danger to the school environment and educational objectives of the community and are, therefore, forbidden.

Any student wearing, carrying or displaying gang paraphernalia or exhibiting behavior or gestures which symbolize gang membership, or causing and/or participating in activities which intimidate or affect the attendance of another student will be subject to disciplinary action including suspension and expulsion.

Gun /Weapons Free Schools

School rules prohibit bringing to school any items, which are dangerous to students and/or staff. The Homedale School District will require when a student is found to be in possession of **any object intended** to be used as a weapon to be expelled from school for a period of not less than one (1) year, except that the Homedale Board of Trustees may modify the expulsion requirement on a case-by-case basis (Idaho Code Section 33-205 and District Policy 8.25 & 8.26). This regulation shall also apply to any apparatus that gives the appearance of being a dangerous item, such as toy knives, guns, etc. Violation of this provision can be punishable as provided by Idaho Code 18-3302D.

If a student realizes they have an inappropriate object at school, they should inform a staff member immediately, that it is in their possession. Disclosure will result in the staff member turning the inappropriate object into the office, and the student visiting with the Principal, and the Principal will notify parents who will need to pick up the inappropriate object from school at their convenience.

Inappropriate Items at School

Students are not to bring to school, or more specifically to any classroom, the following items which are considered disruptive to the educational process: pagers, beepers, laser pointers, radios, cassette/compact disc players, head sets, video-type games or any other toys, etc. Unacceptable items will be confiscated and given to the building principal for further action. Cell phones may be brought to school but must be turned off and may not be carried around during the school day.

Inappropriate Language

This school does not condone profanity and any other types of inappropriate language, drawings, pictures, writings, or expressions. Those who involve themselves in these types of things will be subject to severe disciplinary consequences, which could lead to suspension and/or expulsion.

Inappropriate Physical Contact

Homedale Middle School administration, staff and the student council **DO NOT** condone public displays of affection on school property. Students involved will be contacted and asked to correct the problem. Failure of students to cease the action may result in suspension.

Lockers 7th/8th Grade

Each student will be assigned a hall locker when they register. Students are not authorized to change locker assignments or use another locker without permission from the administration. Lockers are for your convenience and are the responsibility of the student. The school assumes no responsibility for safeguarding articles left in lockers. **Always take items of value with you or check it in at the office.** Permission is granted for students to provide their own lock on their assigned locker. Locks that are placed on the wrong locker will be removed with bolt cutters. The school **will not** replace locks that must be removed. Students will be allowed to go to their lockers before school, at lunch, and after school.

Lunchroom Conduct and Regulations

In order to maintain a clean building and campus, all students are required to cooperate with the cafeteria personnel and lunchroom supervisors and to keep the cafeteria as clean as possible. A student may lose lunchroom privileges if conduct is not appropriate. They will also be subject to disciplinary action.

1. Students in the serving line are expected to conduct themselves in a courteous manner. Crowding or cutting in the serving line is not permitted.
2. The throwing or misuse of food or utensils is not permitted.
3. The taking of any food or drink out of the lunchroom is not permitted, unless requested in writing by staff.
4. Students are required to deposit any wrappings, trash, and disposable containers in the waste containers.
5. Lunchroom supervisors' requests must be honored at all times.

Lunch tickets can be purchased in the lunchroom by 8:10 a.m. and are not transferable. Lunch tickets will not be charged for any reason!

Middle School Lunch Period

Students are to be in one of the following areas during the noon lunch period:

1. School cafeteria,
2. Designated play areas for the 5th/6th grade students and 7th/8th grade students.

Middle School Opening

The Middle School building opens at 7:50 a.m. each day. Students are not allowed in the building prior to 7:55 a.m. unless an extra-curricular activity involving the student has been scheduled.

Middle School Store

The school store may be open on Tuesdays and Thursdays during the last twenty (20) minutes of the lunch period. It is emphasized that the opening of the store is a privilege and may be forfeited at the discretion of the staff.

The 5th/6th grade will operate the school store on alternate Fridays.

Notification to Parents Regarding Right to Receive Teacher Information

Federal Law requires that each school district receiving Title I funds notify parents of each student attending any school receiving these funds that information regarding the professional qualifications of their child's classroom teacher(s) may be requested.

As a parent of a student attending a school receiving federal program funds, you have the right to know:

- Is my child's teacher licensed to teach the grades and subject(s) assigned?

- Is my child's teacher teaching with a provisional license, meaning the state has waived requirements for my child's teacher?
- What is the college major of my child's teacher?
- What degree or degrees does my child's teacher hold?
- If there are instructional aides working with my child, what are their qualifications?
- If my child is or will be taught for 4 or more consecutive weeks this year by a teacher who is not highly qualified, will I be notified in a timely manner?

To request the state qualifications for your child's teacher or instructional aide, please contact the Homedale School District Office at 337-4611 or the building principal.

Nursing Services

Part-time nursing services are provided to assist in emergencies, and are available for students on a referral basis. When students become ill at school, they should first get teacher permission to leave class and then go immediately to the office for assistance. If it is determined they are too ill to remain at school, parents will be contacted. Students who need to take medication during the school day should bring a written note from parent/guardian or their doctor explaining the use of the medication and the prescribed dosage. Parents should inform the school when it is important we know about a particular medical problem. A sincere effort will be made to maintain confidentiality regarding student medical problems.

Parent Involvement Policy

The Board of Trustees of this district has set expectations for parental involvement in Title I schools to encourage parental participation in the education process for their children (see Policy (370)). The expectations include:

- An annual meeting with parents of Title I students.
- Keeping parents informed about their child's academic progress, assessment results, curriculum, and expected proficiency levels.
- Encouraging and supporting parental attendance at meetings.
- Involving parents in planning, reviewing and improvement of Title I programs.
- Provide parents with strategies to support and assist their child at home.
- Each school site to plan and implement an annual parental involvement plan.
- Develop a partnership through the School – Parent – Student Compact, which outlines how parents, school staff and students will share in the responsibility for improving student achievement.
- An annual evaluation of the parental involvement program that includes parental input.

Personal Cleanliness

Personal hygiene is important to everyone. Please do your best to come to school wearing clean clothing and having clean bodies free from offensive odors associated with poor personal hygiene. Deodorant, using soap when showering are all important. We can assist you with the above items if need be.

Physical Education Class Dress Requirements

The following dress standard shall be required of each 7th/8th grade student who participates in a physical education class: PE uniforms are available for purchase, or **solid red shorts and a plain red tee-shirt (with sleeves) without any markings, logos, or writing on it** can be worn. The student's name can be on the shirt and shorts. Those students who for religious reasons for a different dress standard will be accommodated if requested by the parent/guardian in writing and approved by the principal. On days that warmer clothing is necessary, sweat suits, etc. can be worn over the required dress. The student must also furnish an appropriate pair of gym shoes, which are used for P.E. only. This means that the shoes will not be worn for everyday use and will remain with student's P.E. gear.

Progress Reports and Report Cards

Student progress reports will be issued to all students (for delivery to parent/guardian) near the middle of each nine-week grading period. If the parents desire a conference, it will be scheduled upon request through the office (337-5780). **Please discuss all progress reports with your student and, after reviewing them, sign them and return the bottom portion to the school.**

Report cards are issued to students (or parents/ guardians at Parent-Teacher Conferences) at the end of each quarter.

School Discipline

By the time a student reaches the Middle School, he/she should be aware of what constitutes appropriate conduct in school. Each student is responsible for his/her own actions. Willful disobedience, open defiance of a teacher's authority, or use of profane and obscene language or gestures is also cause for discipline, suspension or expulsion from school. Staff members have the right to discipline students in a manner that is appropriate to the offense.

School Records

The Family Educational Rights and Privacy Act of 1974 provide parents access to all of a student's educational records. It also states that parents must be given the opportunity for a hearing to challenge the content of the records. The school will insure and provide confidentiality pertaining to student's records in that only authorized persons will have access to them.

Under the Act of 1974 schools cannot release files on students except:

- to other educational agencies with a legitimate educational function;
- to officials of other schools when a student is transferring;
- to certain federal agencies and to agencies in connection with a student's request for financial aid;
- when parents authorize the release; or
- when the information has been lawfully subpoenaed.

School Safety

The School board of Trustees deems the following actions disruptive to school discipline:

1. Instigating, or taking part in false fire alarms or bomb scares;
2. Possession of, or distribution of any inappropriate item at school; or
3. Any act which, in the judgment of the principal, is detrimental to the health, welfare, or morals of those attending Homedale Middle School (Idaho Code 33-205).

School Visitors

Parents and Patrons are always welcome in our school. Upon entering the building, we ask that you sign in at the office, acquire a visitor's pass so we can assist you. Every parent, guardian, or other person who upbraids, insults, or abuses any teacher of the public schools, in the presence and hearing of a pupil thereof, is guilty of a misdemeanor (Idaho Code 18-916). **Due to school liability, students/minor visitors are not welcome during the time school is in session.**

Search and Seizure

The school administrators and/or teachers, upon reasonable suspicion that a student has violated or is violating either the law or the rules of the school, can search students, vehicles, lockers or any other place of concealment on the school ground. Items suspected to be illegal, stolen or unsafe can and will be confiscated until such time the situation can be resolved by the proper authorities.

Snow Policy

Due to the responsibility of the school to provide a safe environment for all students and staff, there is to be no snowballing, face washing, etc. on school property. Snow and ice are not to be brought into any school building.

Stealing - Theft

It is considered stealing or theft if you take something that does not belong to you. Those who are found guilty of stealing are subject to severe disciplinary measures, which could involve the police, suspension and/or expulsion.

Student Government

The Homedale Middle School student government will consist of five (5) student body executive officers, with the principal serving as the advisor. Meetings will be scheduled on a monthly basis. The five (5) executive officers will be elected by the student body, no later than the third (3rd) Monday in September. Any student wishing to declare as a qualified candidate for an office must get a nominating petition from the principal's office and gather ten (10) student signatures. The five (5) executive student body officers are:

* **President** - must be an 8th grade student ***Vice-President** ***Secretary-Treasurer** ***Reporter**
***Historian** - must be an 8th grade student Each homeroom teacher will conduct an election, within their homeroom, to determine a homeroom student council representative and an alternate, to serve for the year. The representative or alternate will attend each student council meeting. Any student participating in student government will be subject to the district academic code for activities.

Student Injuries

Even with the greatest precautions and the closest supervision, accidents can and do happen at school. They are a fact of life and a part of the growing-up process our children go through. Parents need to be aware of this and be prepared for possible medical expenses that may arise should their child be injured at school. **The school district does not provide medical insurance to automatically pay for medical expenses when students are injured at school.** The district carries only legal liability insurance. The district does make student medical insurance available to families for their individual purchase. Brochures outlining the coverage and premiums are handed out at the beginning of the school year, and are available at the school office.

Tardies

Tardies disrupt classes that are in session. For this reason, tardies will not be tolerated at Homedale Middle School. Students arriving to class more than ten (10) minutes after the second bell has rung will be considered **absent** from that class period. A student is **tardy** if he/she is not in their assigned area when the bell rings each period. The teacher will determine whether the tardy will be excused or unexcused. Unexcused tardies will accumulate during a nine (9) week grading period and will be handled in the following manner:

2nd Tardy - Necessitates a conference with the teacher. The administration will be notified.

3rd Tardy - Necessitates a conference with the administration, at which time they will be assigned to extended school.

4th Tardy - Necessitates a conference with the administration. The student will be assigned to extended school.

5th Tardy - Necessitates a conference with the principal and student is moved to the appropriate step on the discipline plan.

Technology Usage

All students of the Homedale School District are provided with access to the district computer network. The network provides students with essential learning tools and instruction while here at school. The use of Homedale School District's information networking capabilities is a privilege, not a right. Each time a user accesses the district's network from any school computer, an electronic signature is required. The electronic signature is legally binding and indicates the user's understanding of and agreement to comply with the Technology Acceptable Use Policy. The policy can be found on the district's website: www.homedaleschools.org

Telephone Calls

The office phones are for business use only. We realize that you may need to use the school phone. We ask that you do so sparingly, and ask permission. A pay phone is available for student use as well.

Textbooks, Workbooks, Etc.

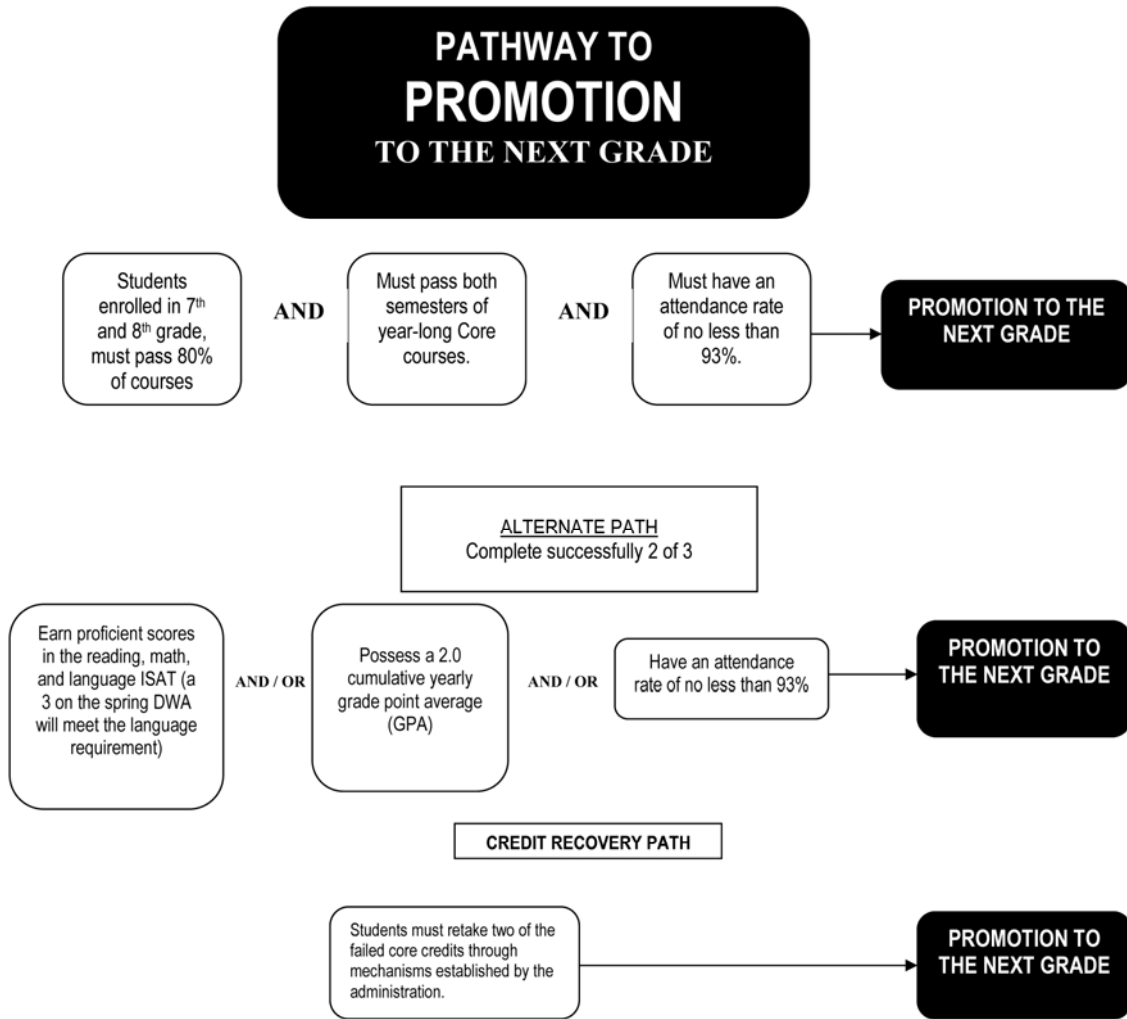
The major portion of textbooks, workbooks and various other equipment is furnished to the students by the school. It is the responsibility of the student to give adequate care and prevent the loss of said materials. The student, and/or parent/guardian, will be responsible for the cost of repair or replacement of any materials issued which are damaged or lost.

Tobacco

Student's use or possession of tobacco in any form, including chewing tobacco, on the school premises, either during school hours or while attending school-sponsored activities, is prohibited. Those found in violation, according to policy, can/will be referred to the Student Assistant Team (SAT) for assessment and/or group referral. In addition, when the situation calls for it, the violator will be turned over to the police, suspended, and/or expelled from school.

PREPARE YOURSELF FOR SUCCESS

- Stay organized by using agendas and binders
- Be proactive, develop a habit of working hard and managing your time wisely.
- Continually think and ask questions that will help you understand the assignment.
- Work together and communicate often with your teachers and parents about your academic classes.
- Attend your classes and be on time.



*Credit Recovery Path will be determined by the IEP team for students with disabilities.
 *LEP student's promotion will be determined by the IELA scores or the LEP/District team.
 *Until two of the failed core credits are retaken, students will be retained in the previous grade level.